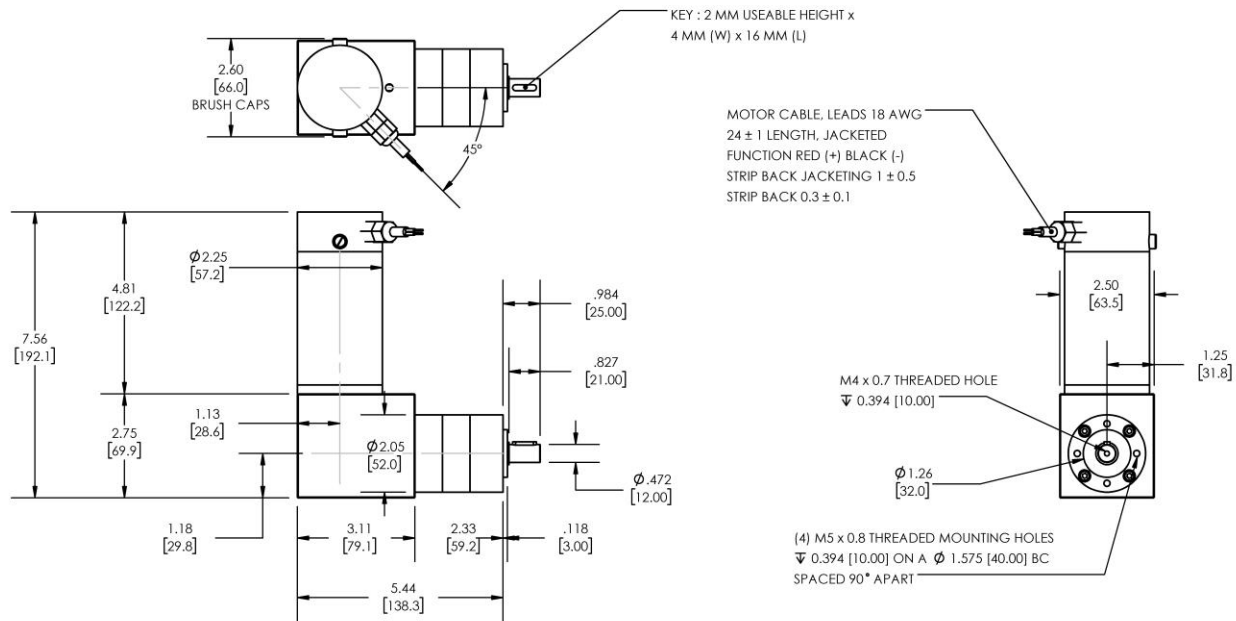


Model Number:

MMP D22-490H-90V GRA52-035



DIMENSIONS ARE INCHES [MM] UNLESS OTHERWISE STATED

PLANETARY GEARMOTOR OUTPUT PARAMETERS:	VALUE	UNITS	TOLERANCE
Gearhead Ratio (exact)	34.97 : 1		
Gearhead Shaft Output Speed (at full-load)	138	RPM	MAX
Gearmotor Rated Continuous Torque	90	In-Lbs	MAX
Gearmotor Rated Peak Torque	212++	In-Lbs	----
Gearhead Standard Backlash	45	Arc Minutes	MAX
Gearhead Efficiency	75%	----	----
Output Shaft Radial Load Capacity	72	Lbs	MAX
Output Shaft Axial Load Capacity	23	Lbs	MAX
Gearmotor Total Weight	6.5	Lbs	MAX

++ All Peak Torque values are dependent upon duty. Contact our sales office for details.

DC MOTOR PERFORMANCE PARAMETERS:	VALUE	UNITS	TOLERANCE
Rated DC Voltage	90	DC VOLTS	----
Rated Continuous Current	2.7	AMPERES	----
No-Load Speed	5660	RPM	MAX
Rated Speed	4837	RPM	+/- 15%
Rated Continuous Power Out	195	WATTS	+/- 15%
Rated Continuous Torque	55	OZ-IN	----
Peak Torque (motor only)	270	OZ-IN	----
No-Load Current	0.20	AMPERES	MAX
Back EMF Constant (Ke)	15.9	V/KRPM	+/- 10%
Torque Constant (Kt)	21.5	OZ-IN/AMP	+/- 10%
DC Armature Resistance	4.77	OHMS	+/- 15%
Armature Inductance	7.20	mH	+/- 15%
Armature temperature	155	DEG. C	MAX

NOTES:

- ENCODER & BRAKE OPTIONS AVAILABLE – [FOLLOW THIS LINK FOR DETAILS](#)
- NEMA MOUNTING FLANGE OPTION AVAILABLE – [FOLLOW THIS LINK FOR DETAILS](#)

MIDWEST MOTION PRODUCTS, INC

DESIGN, MANUFACTURING & DISTRIBUTION - MOTION CONTROL EQUIPMENT

www.midwestmotion.com

email: sales@midwestmotion.com